

# VISUAL LITERACY

## WORKSHEET 1

NAME: \_\_\_\_\_



### FIND THE PAINTING...

1. Who is the ARTIST? What is the TITLE of the artwork?  
\_\_\_\_\_
2. This TYPE of painting is known as a...  
A. PORTRAIT    B. LANDSCAPE    C. STILL-LIFE
3. What is the MEDIUM of this painting?  
A. WATERCOLOUR    B. OIL    C. ACRYLIC
4. This painting is from which famous period in the artist's career?    Z\_\_\_\_\_ PERIOD

### COLOUR THEORY

#### 5. Find the painting.

Who is the ARTIST and what is the TITLE?



\_\_\_\_\_

#### 6. This TYPE of painting is known as a...

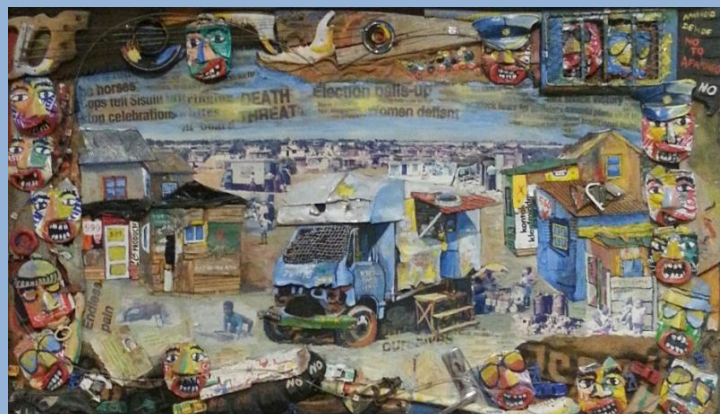
A. PORTRAIT    B. LANDSCAPE    C. STILL-LIFE

#### 7. COMPLIMENTARY colours are \_\_\_\_\_ each other on the colour wheel.

A. OPPOSITE    B. BESIDE

#### 8. Name TWO COMPLIMENTARY colours in the paintings.

\_\_\_\_\_



### FIND THE PAINTING...

9. Find an artwork which refers to June 16<sup>th</sup>, 1976, known as Youth Day. Give the artist's NAME and TITLE of the work.  
\_\_\_\_\_

(Note that this artwork is MIXED MEDIA, also known as BRICOLAGE, a French term and has been made of found objects and paint.)

10. Name 3 FOUND OBJECTS we use every day that the artist has included the artwork.  
\_\_\_\_\_

## FIND THE LANDSCAPE...

11. Find the painting and name the ARTIST and TITLE of the artwork?

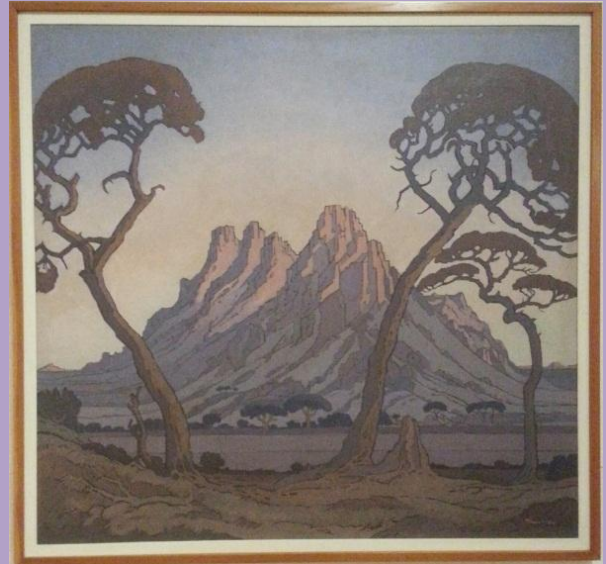
\_\_\_\_\_

12. This TYPE of painting is known as a...

- A. PORTRAIT    B. LANDSCAPE    C. STILL-LIFE

13. Which YEAR was this artist commissioned to paint these paintings for the Johannesburg Railway Station?

- A. 1929    B. 1949    C. 1955



*THE KISS*

14. Find the artwork titled, *THE KISS*, who is the artist?

\_\_\_\_\_

15. This artwork is known as one of the following.

- A. AN ETCHING    B. A PAINTING  
C. A SCULPTURE

16. What is the MEDIUM of this artwork?

- A. MARBLE    B. BRONZE    C. WOOD

FIND this painting and spot the ANIMAL!



17. What do you see?

- A. AN ELEPHANT    B. AN ANT    C. AN ELAND

## WHAT WAS YOUR FAVOURITE?

18. Give the name of the artist and title of the artwork. \_\_\_\_\_

19. Why was it your favourite? \_\_\_\_\_

20. What do you think the artist wanted you to think or feel when you look at it?

\_\_\_\_\_

RUPERT MUSEUM



Showcases a selection of 20<sup>th</sup> century South African and international art

◆ For more information feel free to ask the museum attendants for assistance or contact the museum curator and administrator, Robyn-Leigh Cedras at +27 (0)21 888 3344 or [rupertmuseum@remgro.com](mailto:rupertmuseum@remgro.com) Checkout the website at [www.rupertmuseum.org](http://www.rupertmuseum.org)